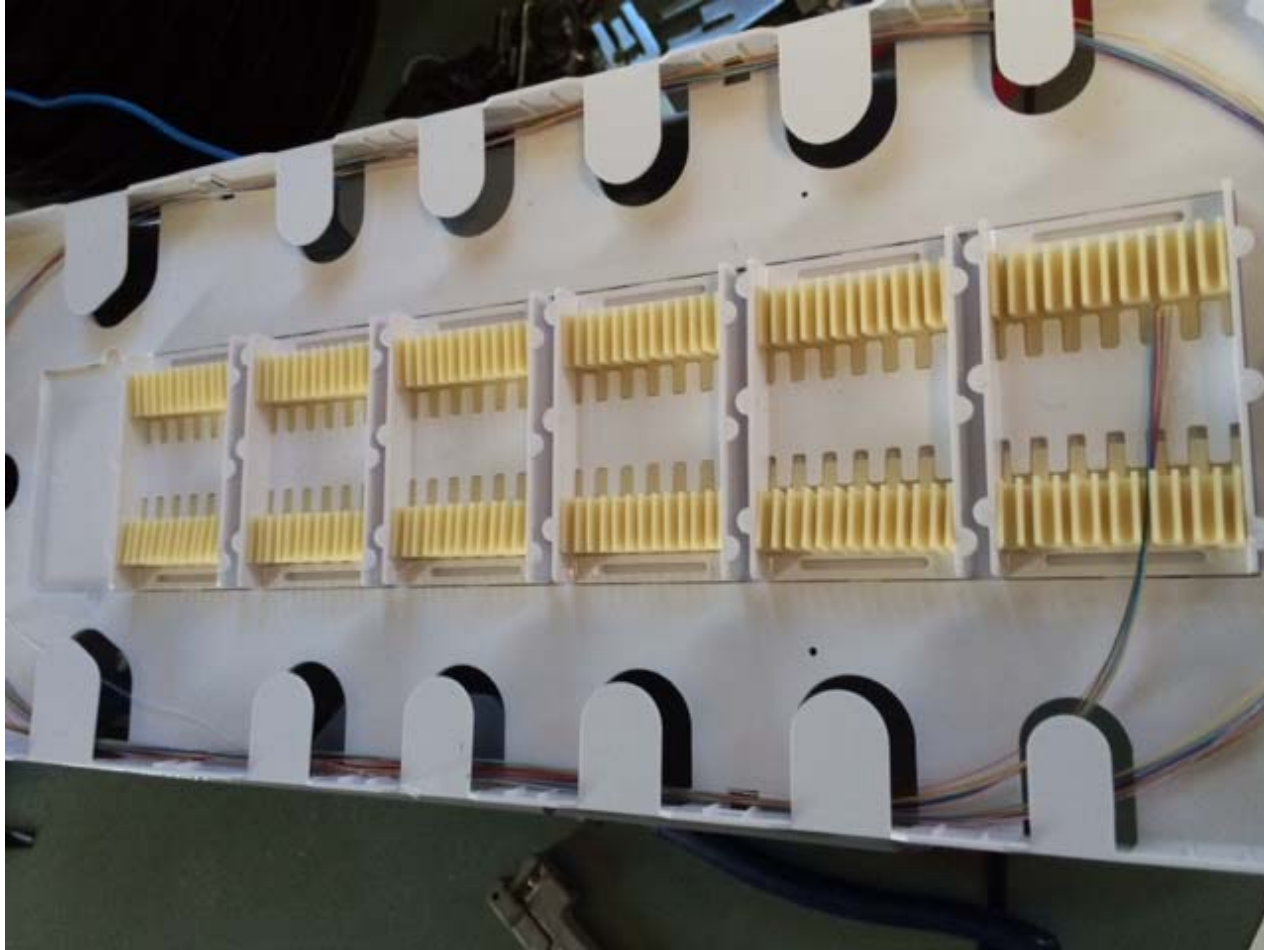


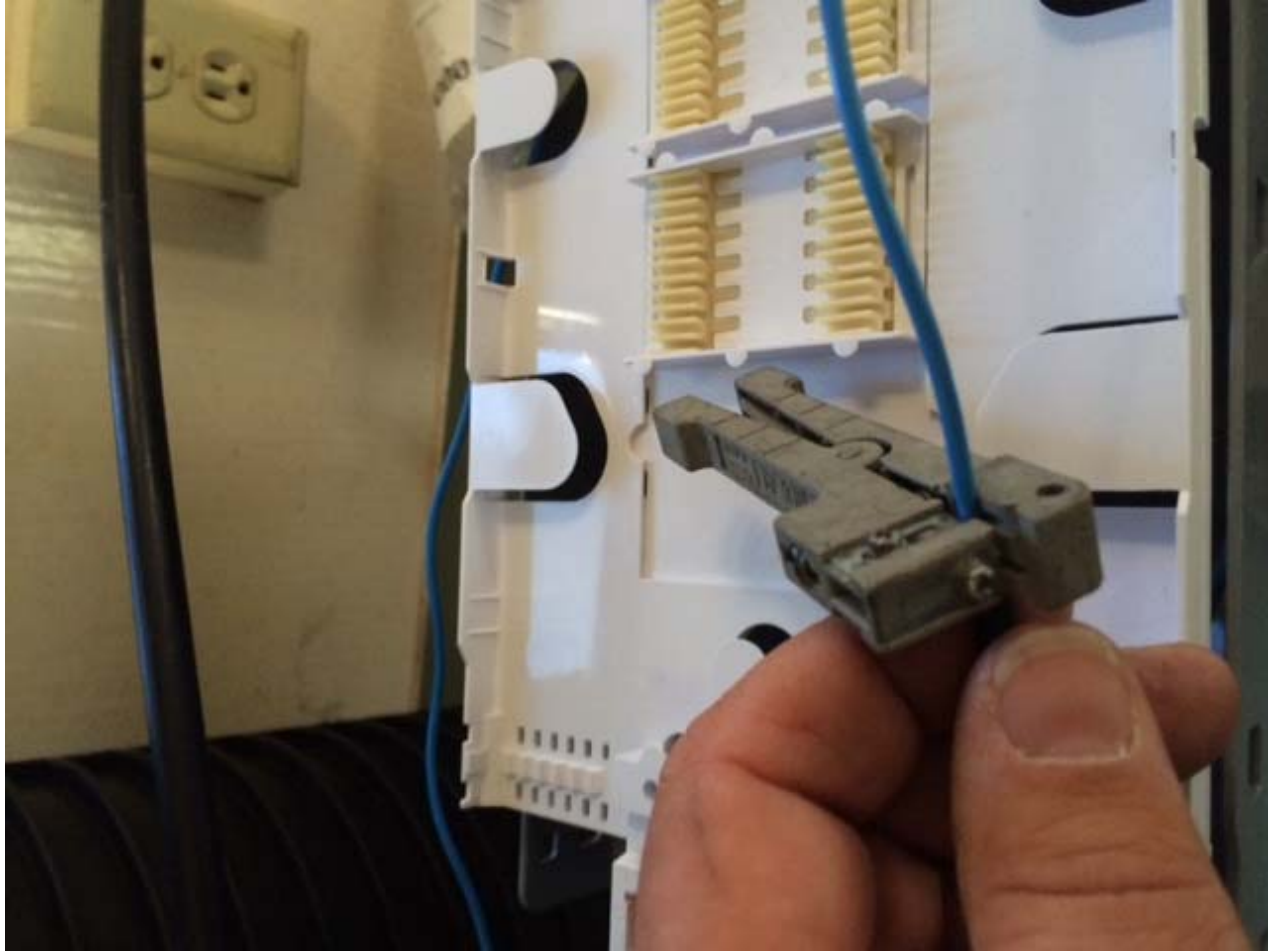
Pre-Traying

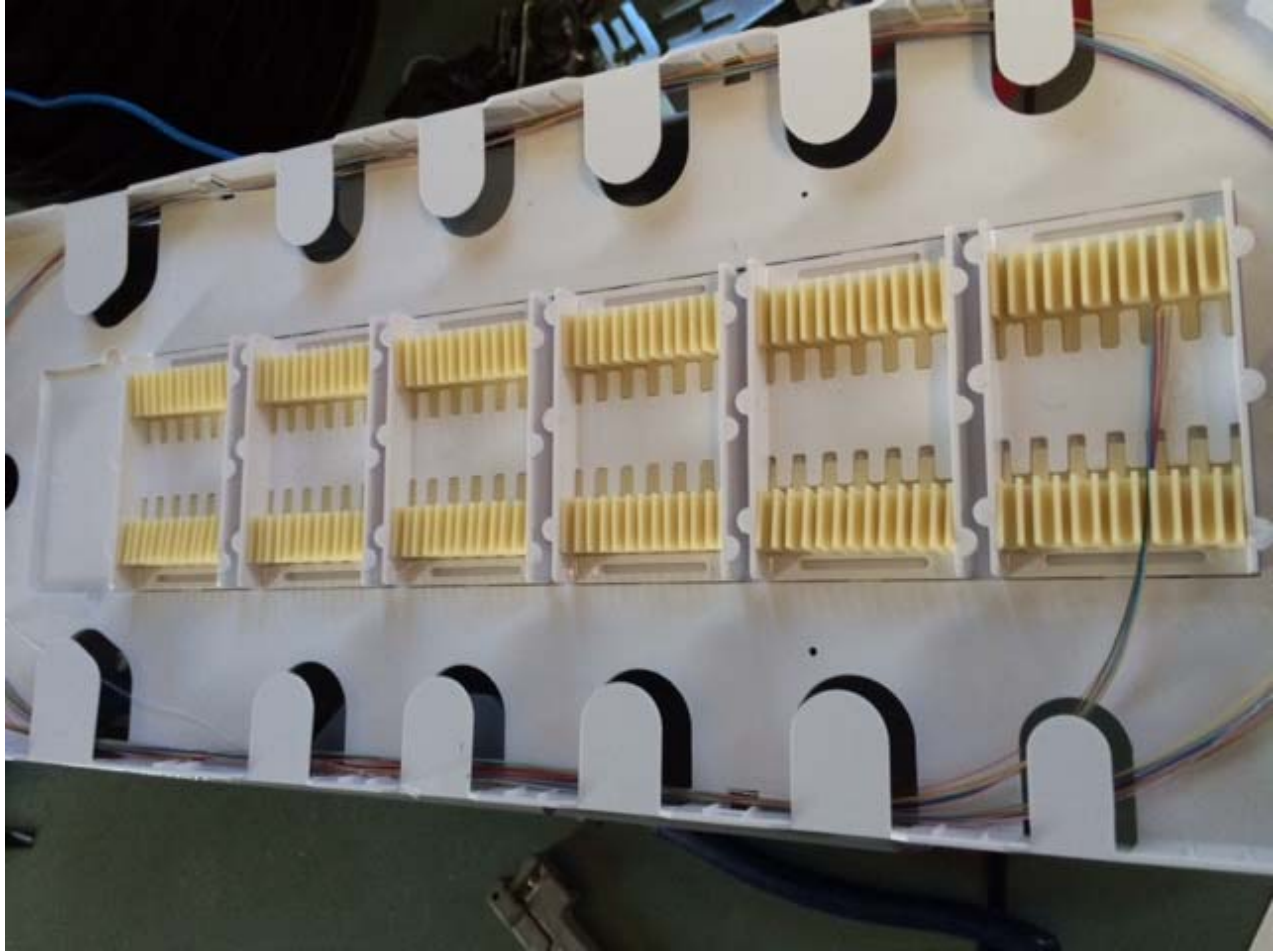


Option 1

- Must allow for at least two wraps inside kit.
- Option 1 allows for one wrap to be placed into the basket, wrap around neck and install supplied cloth tape to loose tube and crack the tube just after tape.
- Secure to tray with provided tie straps.
- Pre measure bare fiber around the tray once and cut fibers to length.

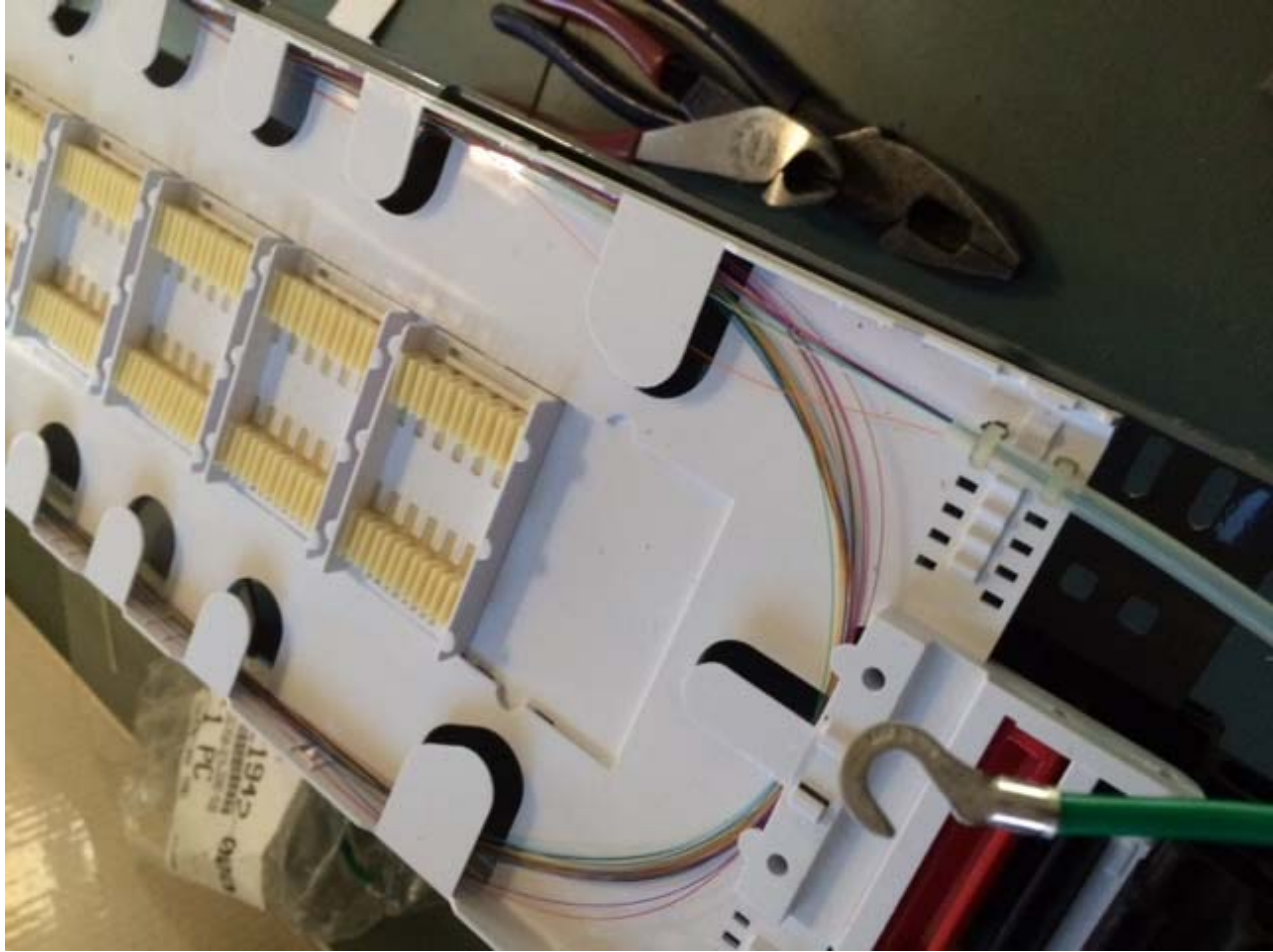


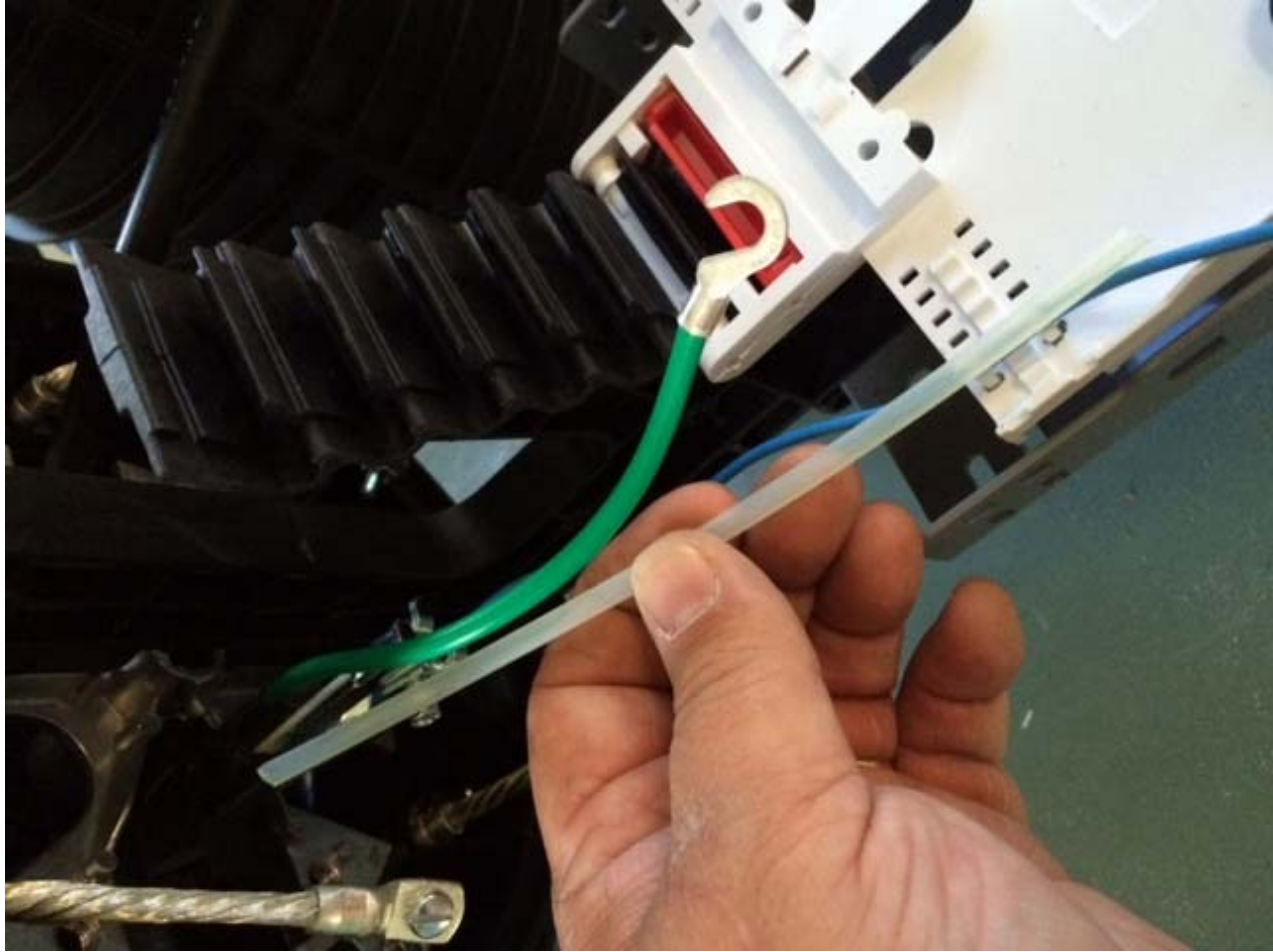




Option 2

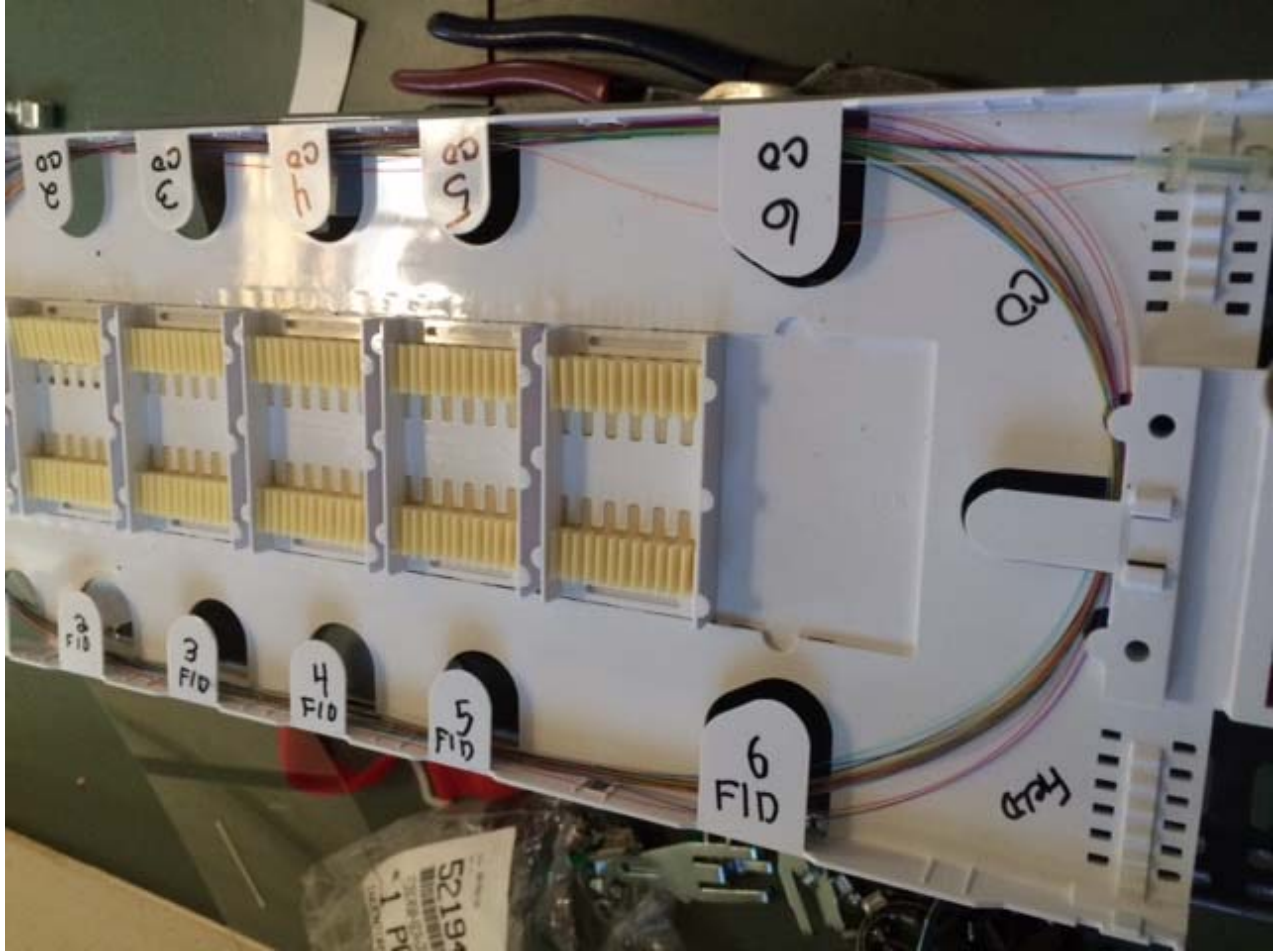
- Must allow for two wraps.
- Option 2 allows for both wraps to be exposed and placed into the tray to be spliced.
- Cut appropriate length of clear tubing supplied and insert loose tube into it.
- Crack tube approx. 2" before tray and remove.
- Secure to splice tray and wrap 2 times around tray and cut to proper length.





Marking

- On the inside of the kit supply as much info as possible.
- Mark CO and Field/Branch on the tray.
- Mark tube numbers on the tray tabs.
- Outside of the kit use colored tape to denote which fiber is which: Red= CO, Blue= Field, Yellow= Branch, Orange= Mux cable, Green= HFC mux





- Use supplied cable markers (Yellow) list cable count/cable name/footages and any other relative information that would be helpful.
- Move tag so that it is facing downward to prevent premature fading and extending the life of the information.

Secure and Close

- Secure the ground by attaching it to the preinstalled ground straps.
- Wrap trays with supplied Velcro tray strap.
- Line up tabs and be sure that O-Ring is in place then secure the dome with the split collar and make sure it closes correctly.





